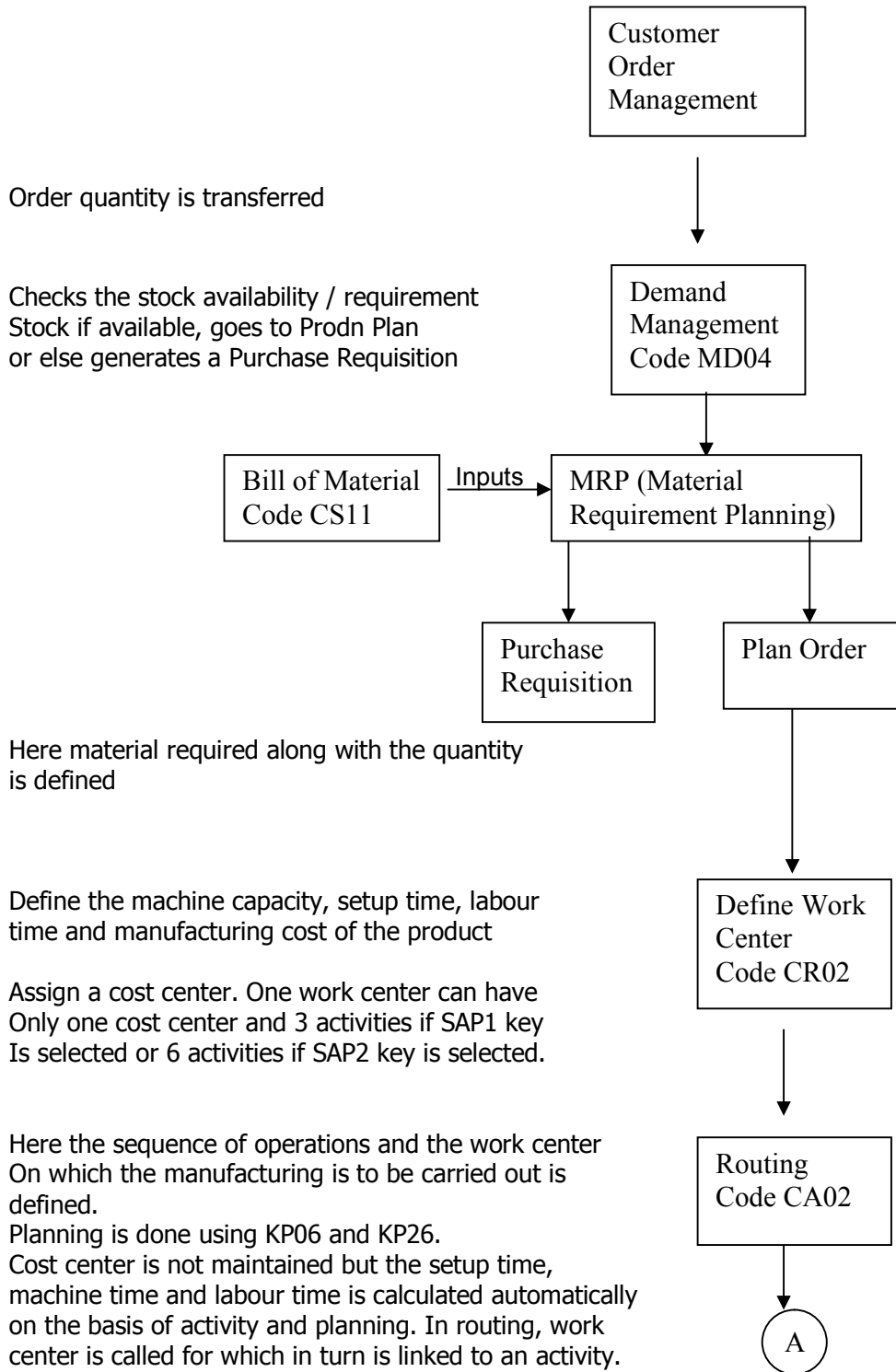


## FLOW OF PRODUCTION PLANNING

PP flow starts with the receipt of sales order from the customer



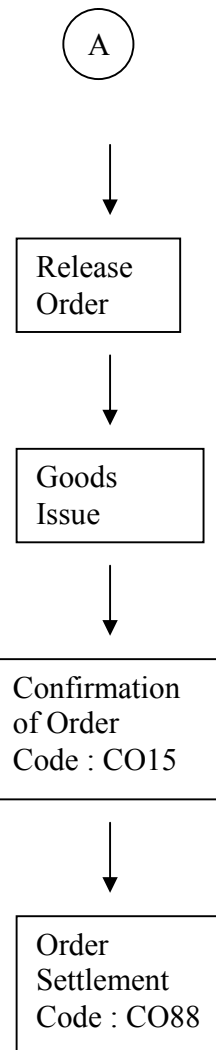
In routing we can also select through a Control key whether it is in-house production or outside production.

Actual production order will be released.

WIP Stage. Actual processing takes place.

This is created after completion of actual Production. We can fully or partially complete the order.

It is the final step in PP. Here the goods are transferred to FG or Semi FG. After the completion of order costs will be automatically calculated.



**SAP PP Tips by : Jason**

# Resource Guide

## Recommended Reading

### **mySAP Certification - Criteria For Application**

The guidelines: Criteria to applying for a SAP Certification:

<http://www.erpgreat.com/general/mysap-certification.htm>

### **SAP Production Planning Table**

All the available Production and Planning tables such as MRP, Demand Management and Discrete Production etc.

<http://www.erpgreat.com/production/sap-production-planning-table.htm>

### **SAP PP Self Test Certification Questions**

Samples PP questions to test your knowledge:

<http://www.erpgreat.com/production/sap-pp-self-test-certification-questions.htm>

### **Commonly Used Tcodes in PP Module**

List of frequently used PP transaction codes in the SAP R3 System.

<http://www.erpgreat.com/production/commonly-used-tcodes-in-pp-module-part-1.htm>

### **Guide To Mass Replace Work Center**

A step-by-step guide on how to mass replace the work center with screen shot.

<http://www.erpgreat.com/production/guide-to-mass-replace-work-center.htm>

---

Get more SAP Production and Planning Tips:

<http://www.erpgreat.com/sap-pp.htm>