

## SAP PATCH ADMINISTRATION

### Overview of Patches:

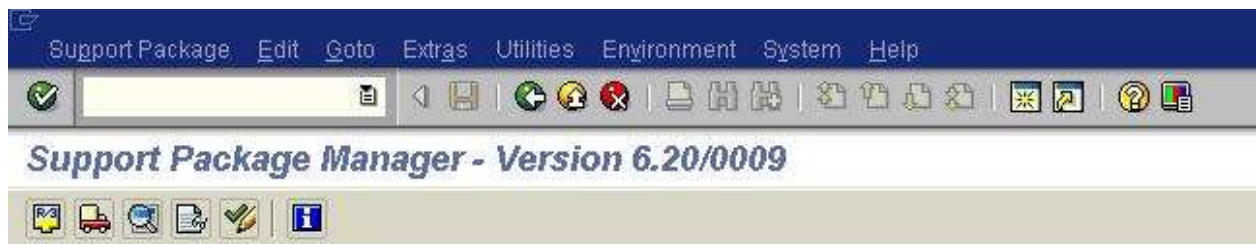
Patches are used to fix the bugs in the system. The transaction used for patch administration is SPAM. Patches are always applied in 000 client.

There are 4 different types of patches – ABAP (SAPKA620XXXX); BASIS – (SAPKB620XXXX); HR – (SAPKE470XXXX); & APPLICATIONS – (SAPKH470XXXX); These are also called as Support packs. They should be administered in the following sequence – BASIS (SAPKBXXXXXX), ABAP (SAPKAXXXXXX), APPLICATIONS (SAPKHXXXXXX) & HR (SAPKEXXXXXX).

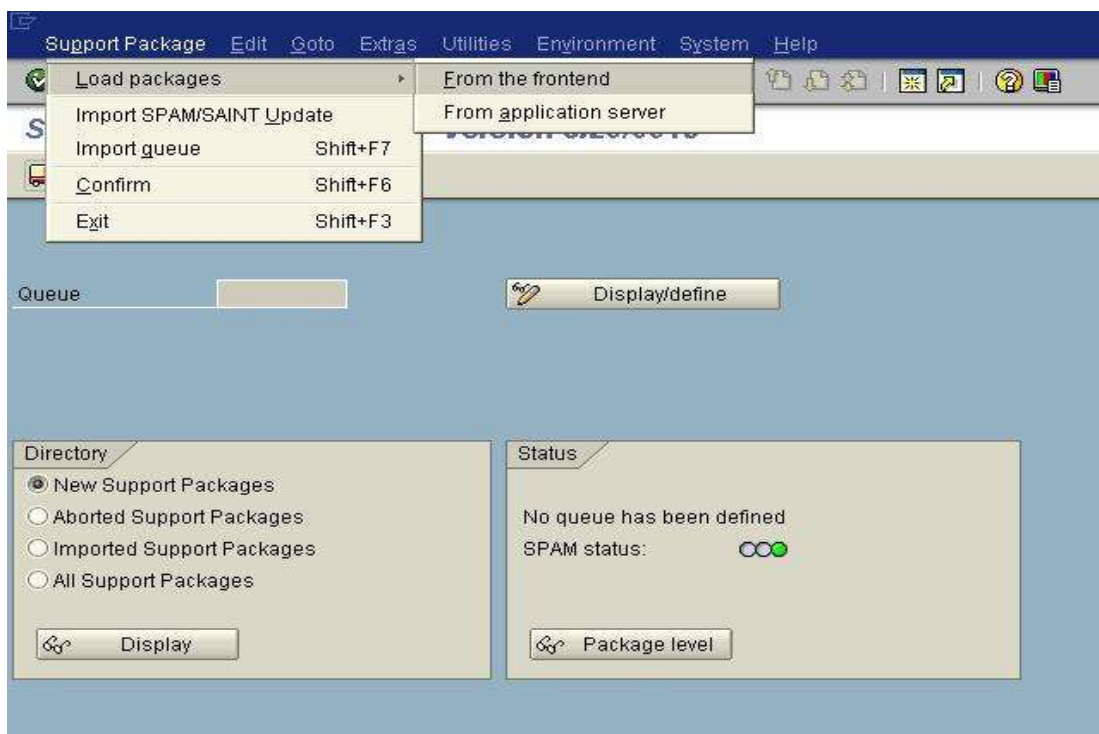
All patches start with SAPK.

Patch levels should be the same in DEV, PRD & QAS.

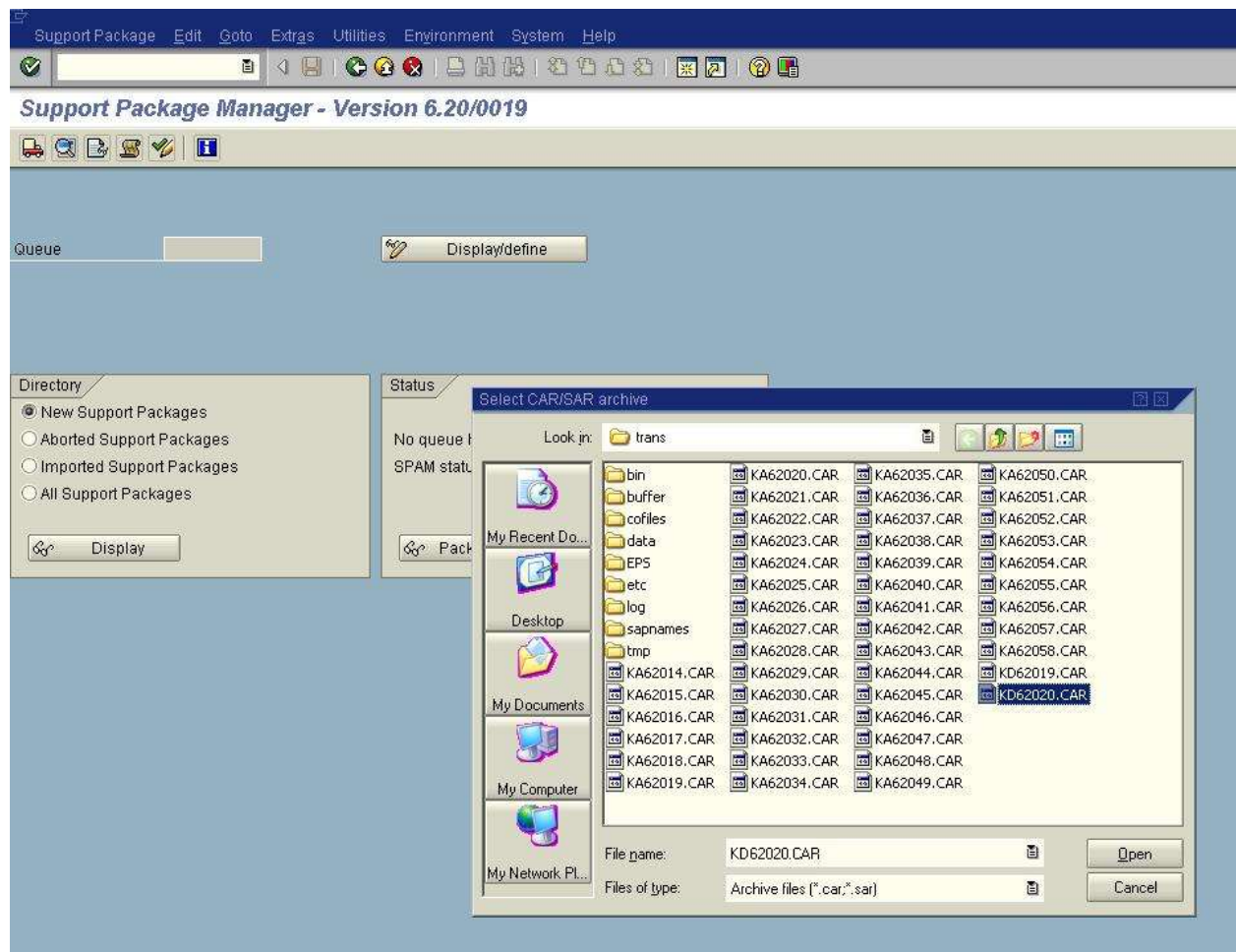
SPAM is the tool which is used to apply the patches. It has its own version. You should always have the latest SPAM version.



To upgrade SPAM/SAINT follow the path Support Package > Import SPAM/SAINT update. Before that load the car file (KD620XX.car) by following the path Support Package > Load packages > From the Frontend. If the car file starts with KD then it is the SPAM update file.



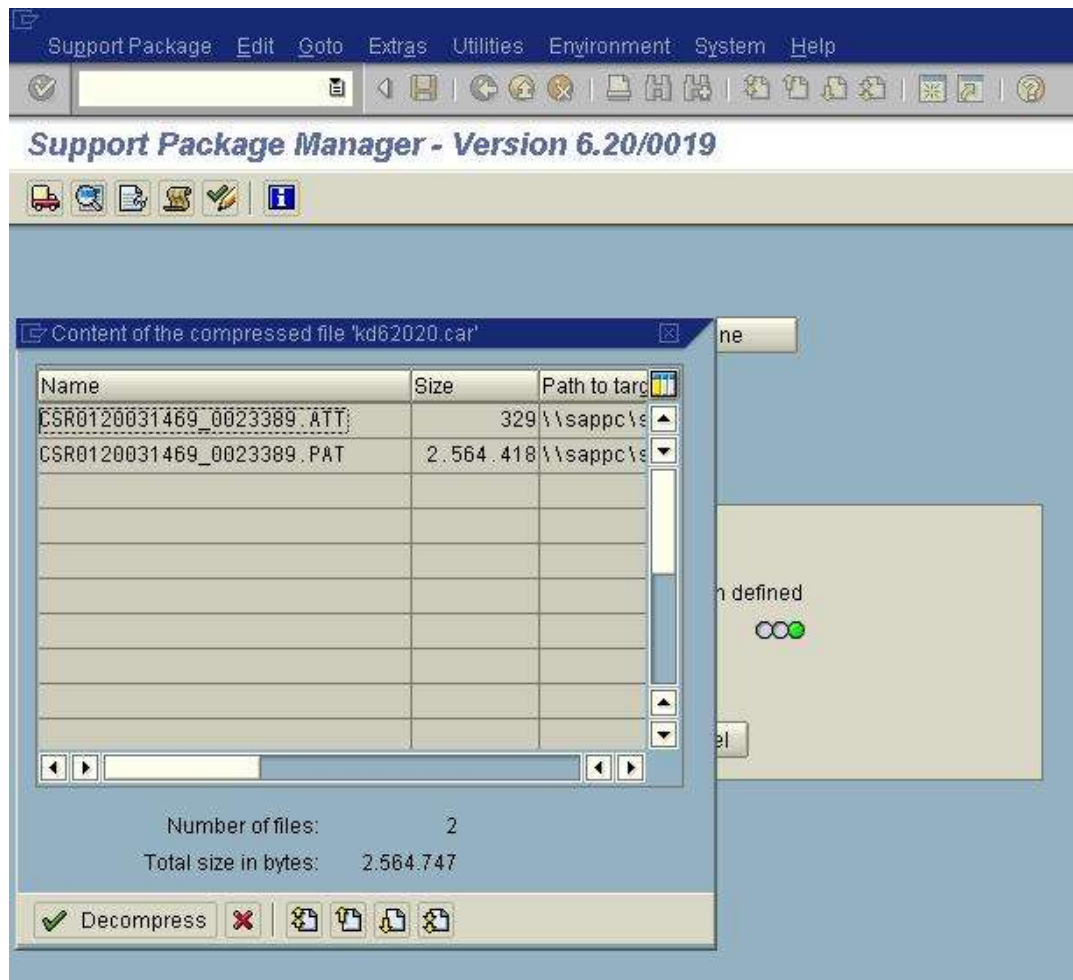
Give the location of the file:



This will uncar the file automatically and creates the .ATT & .PAT files in the trans>eps>in directory.

**SAP Basis Admin Tips:**

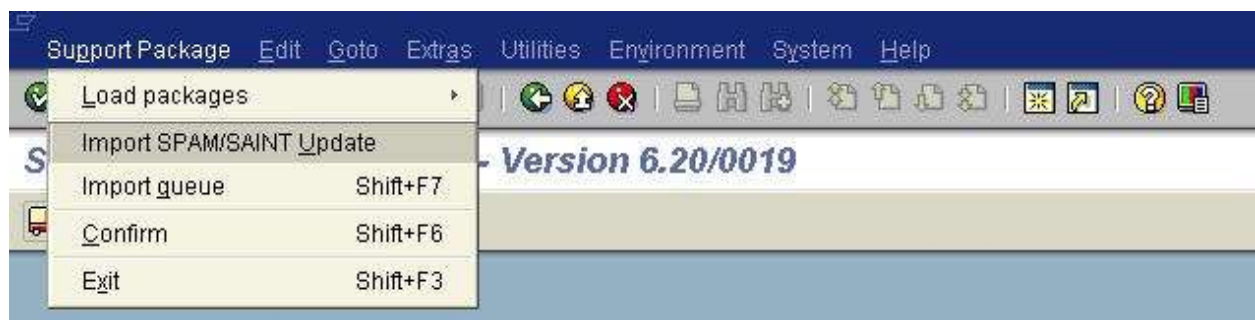
<http://www.erpgreat.com/sap-bc.htm>



Then click on Decompress. Now you can find the .ATT and .PAT files in the trans>eps>in directory. Also when you look in the SPAM tool for New Support packages > Display, you will find the entry with the status as not imported.

“SAPKD62020 SPAM/SAINT Update - Version 620/0020 not imported”

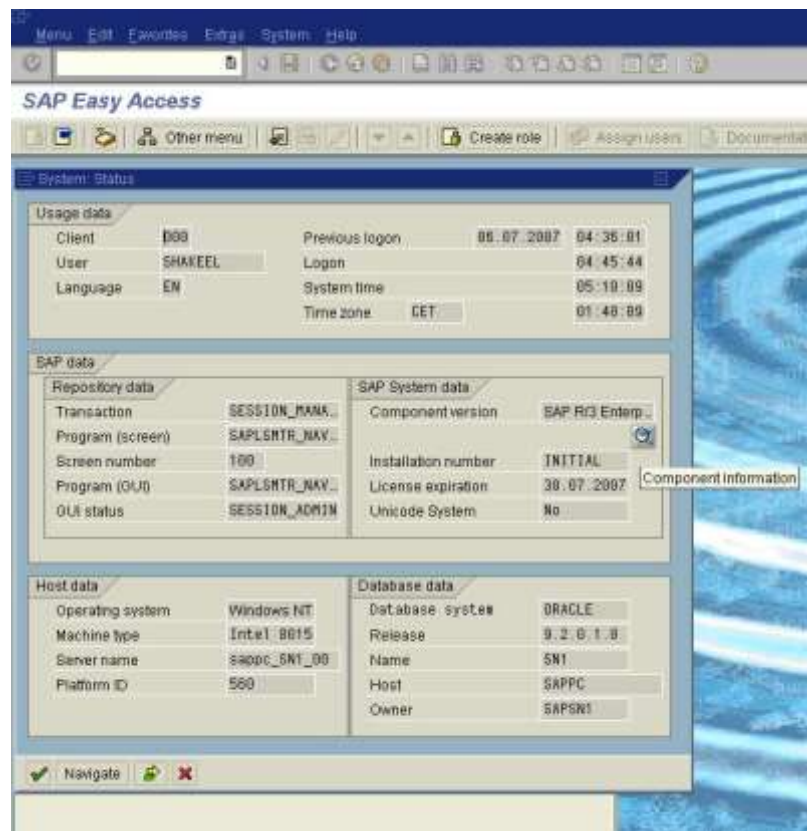
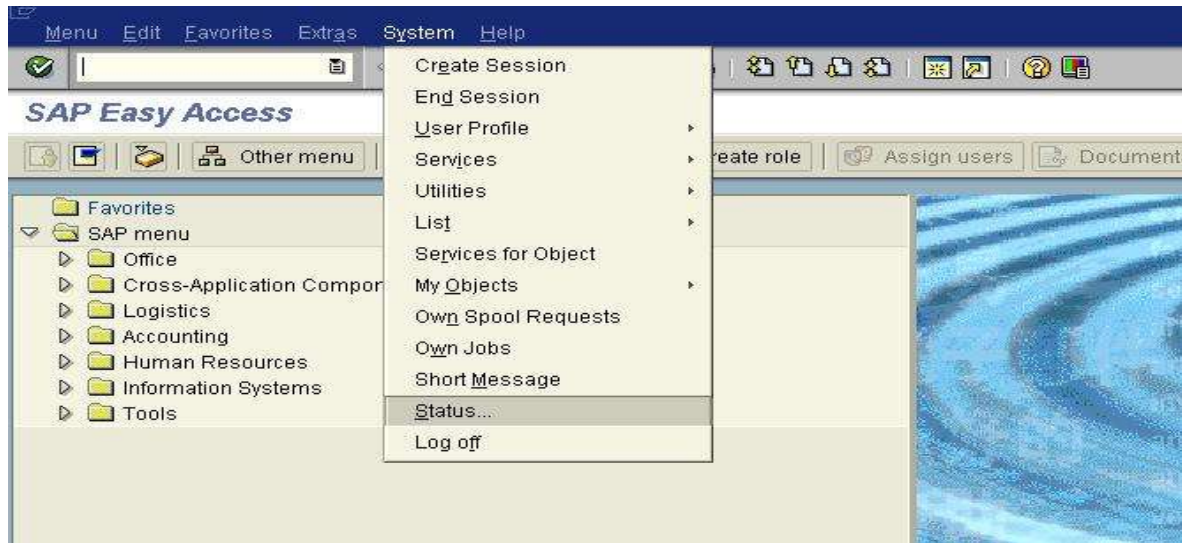
Now click on Support Package > Import SPAM/SAINT update to initiate the update process of SPAM version.



Once completed, restart SPAM.

## How to check the patch levels:

Follow the path – System > Status > SAP System Data > Under Component Version click on Component Information.



SAP Basis Admin Tips:

<http://www.erpgreat.com/sap-bc.htm>



Here the Patch levels are as follows:

SAP\_BASIS – 0017 – SAPKB62017

SAP\_ABA – 0017 – SAPKA62017

SAP\_APPL – 0006 – SAPKH47006

SAP\_HR – 0010 – SAPKE47010

Steps to install patches

1. Schedule an off peak time and download the required patches from service market place.
2. Check for sufficient space in the following path USR > SAP > (SID) > TRANS > EPS > IN.
3. Check the tablespace, it should not be above 90%.
4. Check for sufficient space at OS level.
5. Update SPAM version if needed (as detailed above) – Latest is Version 6.20 / 0022
6. Copy the car files to the trans directory and also make sure that you have sapcar.exe stored in the same location. (If you do not have the file please copy it from the following path USR>SAP>(SID)>SYS>EXE>RUN>SAPCAR.EXE ). Uncar the file (patch) by using the following command at command prompt.

SAPCAR –XVF FILENAME

(Note : There should be space before and after –xvf)

**SAP Basis Admin Tips:**

<http://www.erpgreat.com/sap-bc.htm>



```

E:\WINDOWS\system32\CMD.exe
06/02/2005 12:21 PM 1,894,357 KA62054.CAR
06/02/2005 01:37 PM 2,666,627 KA62055.CAR
06/02/2005 12:33 PM 1,632,663 KA62056.CAR
06/02/2005 01:21 PM 1,632,285 KA62057.CAR
06/02/2005 12:01 PM 3,019,376 KA62058.CAR
06/04/2005 12:40 PM 2,518,431 KD62019.CAR
06/04/2005 12:39 PM 2,553,435 KD62020.CAR
07/06/2007 06:32 AM <DIR> log
03/06/2003 03:20 AM 4,968,516 sapcar.exe
07/06/2007 06:06 AM <DIR> sapnames
07/06/2007 06:32 AM <DIR> tmp
48 File(s) 141,818,429 bytes
11 Dir(s) 21,861,294,080 bytes free

E:\usr\sap\trans>sapcar -xvf ka62018.car
processing archive KA62018.CAR...
x EPS/in/CSN0120061532_0014390.ATT
x EPS/in/CSN0120061532_0014390.PAT

E:\usr\sap\trans>sapcar -xvf ka62019.car
processing archive KA62019.CAR...
x EPS/in/CSN0120061532_0014681.ATT
x EPS/in/CSN0120061532_0014681.PAT

E:\usr\sap\trans>

```

Here the Patch levels are as follows:

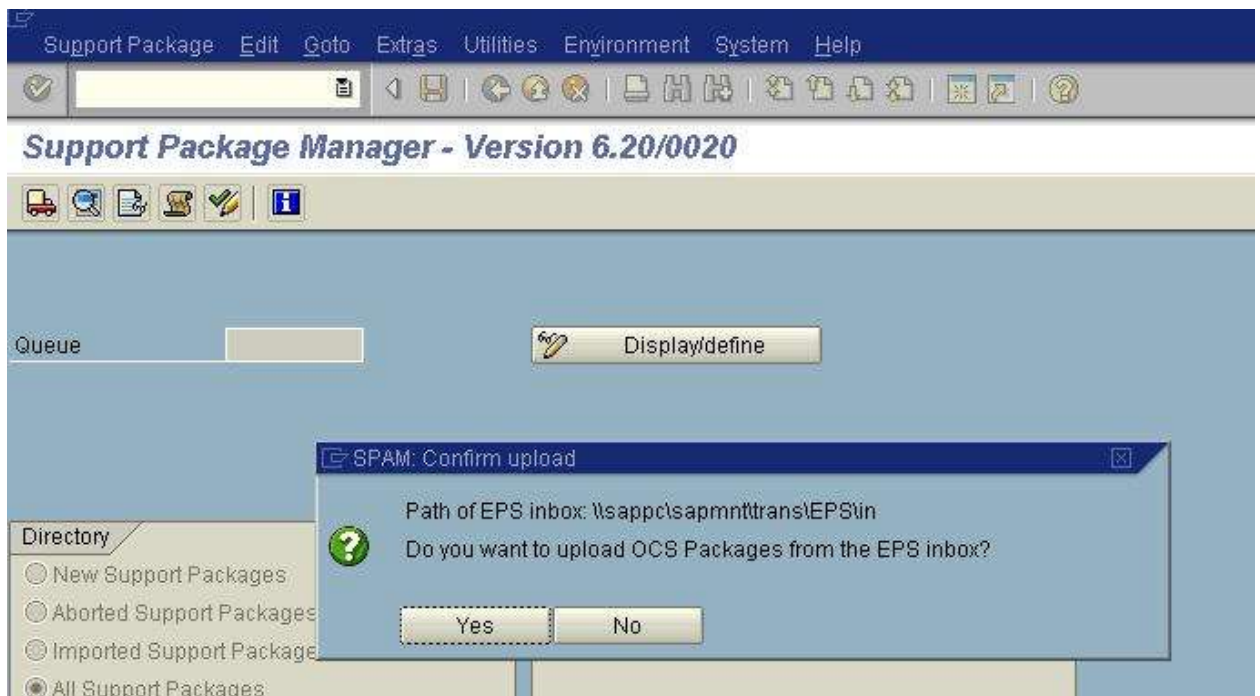
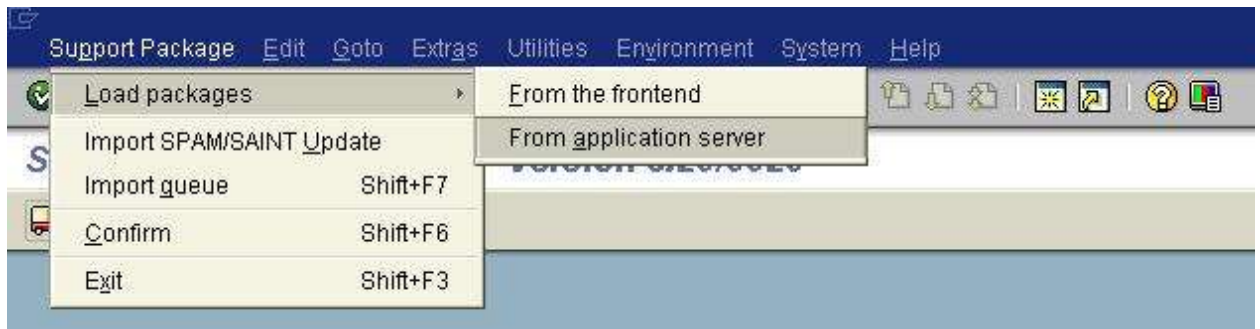
- When the uncar is done the .ATT & .PAT files will be automatically generated in the eps/in directory.

The screenshot shows a Windows Explorer window with the address bar set to `E:\usr\sap\trans\EPS\in`. The left pane shows the folder structure, including `usr` and `sap` subfolders. The right pane displays a list of files:

Name	Size	Type	Date Modified	Attributes
CSN0120061532_0014390.ATT	1 KB	ATT File	1/31/2003 4:35 PM	A
CSN0120061532_0014390.PAT	2,495 KB	PAT File	1/31/2003 4:35 PM	A
CSN0120061532_0014681.ATT	1 KB	ATT File	3/6/2003 2:29 PM	A
CSN0120061532_0014681.PAT	7,007 KB	PAT File	3/6/2003 2:29 PM	A
CSN0120061532_0021757.ATT	1 KB	ATT File	8/30/2005 2:34 PM	A
CSN0120061532_0021757.PAT	2,471 KB	PAT File	8/30/2005 2:34 PM	A
CSN0120031469_0023389.ATT	1 KB	ATT File	4/26/2006 9:13 PM	A
CSN0120031469_0023389.PAT	2,505 KB	PAT File	4/26/2006 9:13 PM	A

An inset window shows a command prompt with the same output as the first screenshot, confirming the successful execution of the `sapcar` command and the generation of the .ATT and .PAT files.

8. Login to the 000 client, go to SPAM and follow the path SUPPORT PACKAGE > LOAD PACKAGES> FROM APPLICATION SERVER (this will read the .ATT & .PAT files from the eps/in directory and will then display in the queue).



**SAP Basis Admin Tips:**

<http://www.erpgreat.com/sap-bc.htm>

List Edit Goto Settings System Help				
OCS File Name	Package	Result	RC	Message Text
CSN0120061532_0014840.PAT	SAPKA62020		0000	Uploaded successfully
CSN0120061532_0014390.PAT	SAPKA62018		0004	OCS file already exists in inbox. Upload not required.
CSN0120061532_0014681.PAT	SAPKA62019		0004	OCS file already exists in inbox. Upload not required.
CSN0120061532_0021757.PAT	SAPKD62019		0004	OCS file already exists in inbox. Upload not required.
CSR0120031469_0023389.PAT	SAPKD62020		0004	OCS file already exists in inbox. Upload not required.

9. Choose Display/Define button which shows you the total available components.

Support Package

Edit

Goto

Extras

Utilities

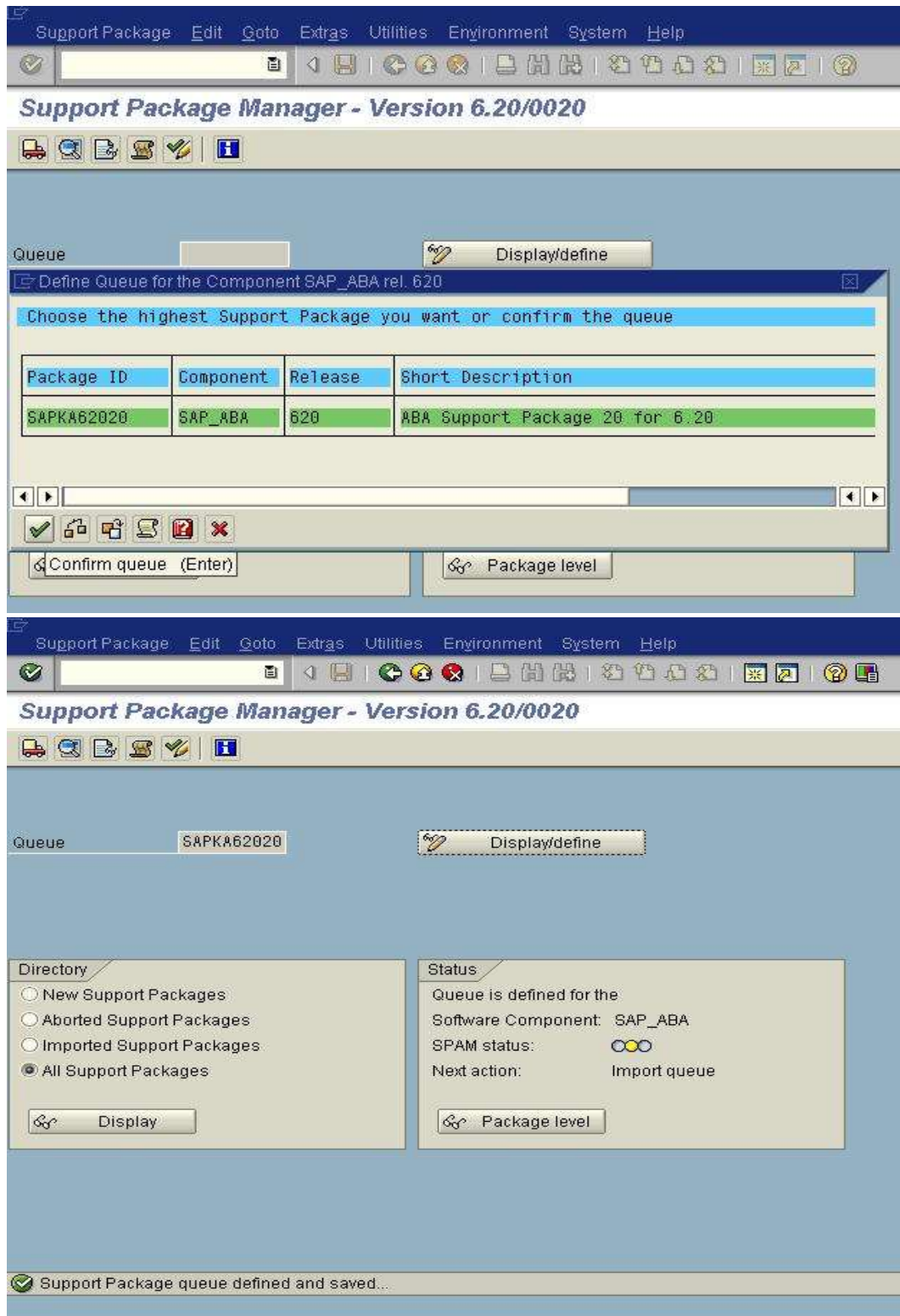
Environment

System

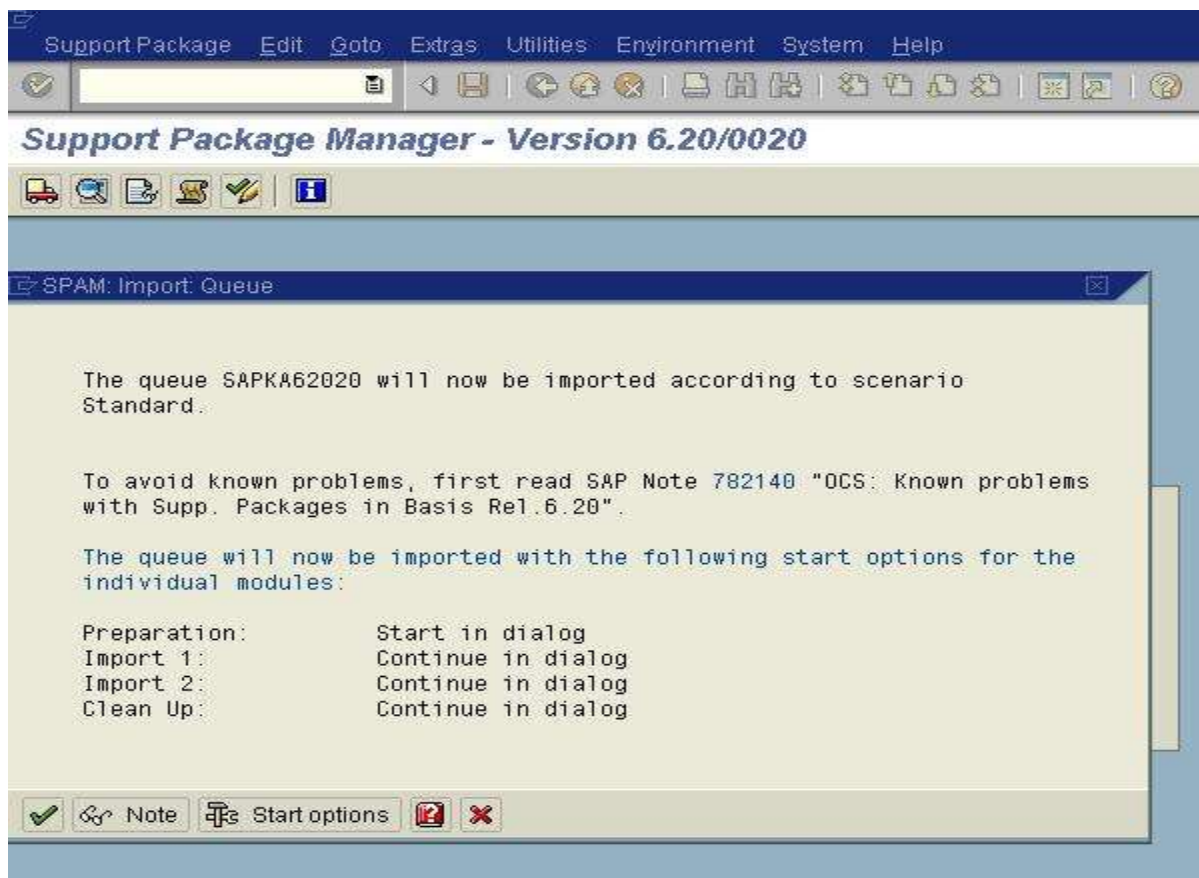
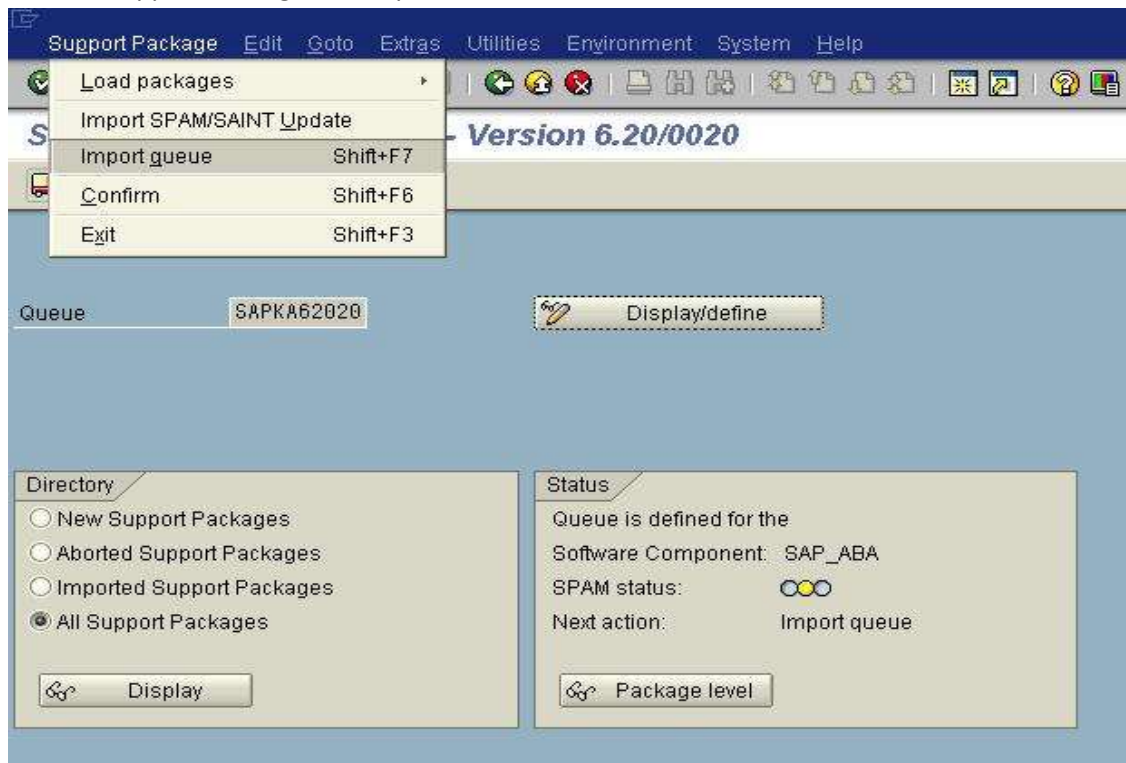
Help



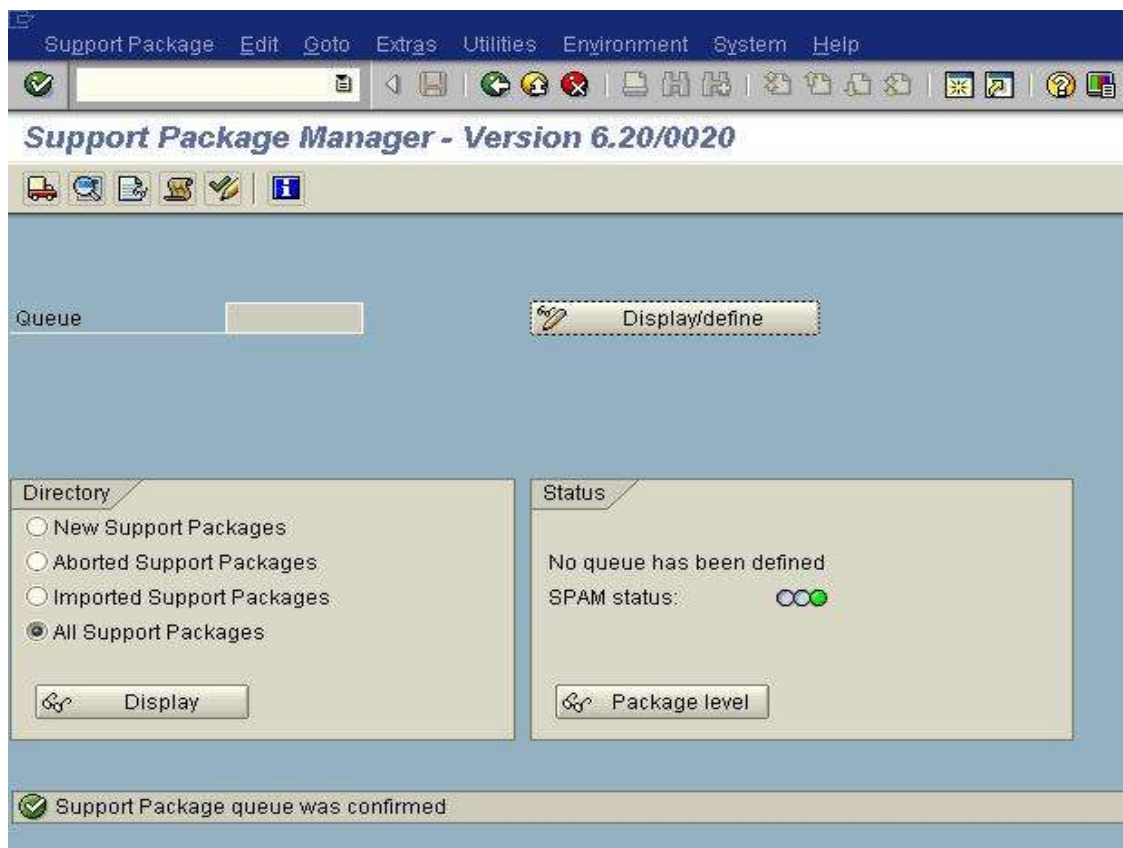
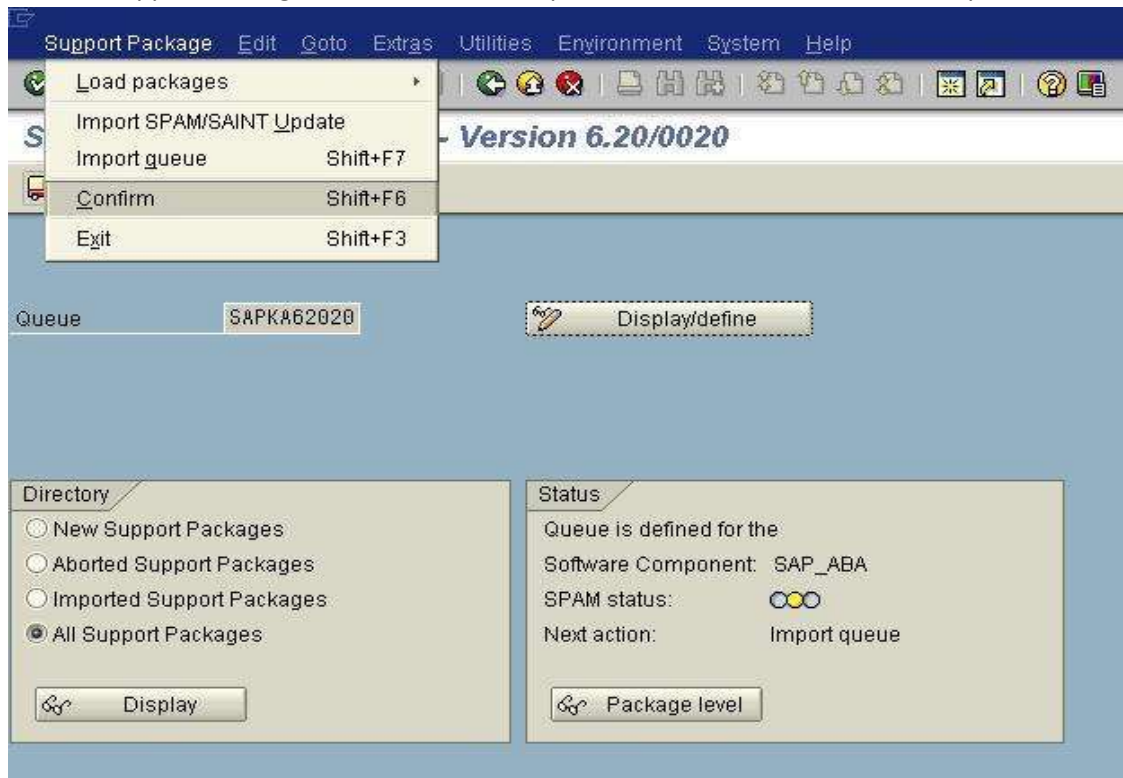
10. Click on the relevant component and it will display the highest support package available to be imported. Confirm the same by clicking on the TICK mark. This will define the support package and save it. You will get the same message at the status bar of the page. SPAM status will change to orange color and Next Action will show as Import Queue.



11. Click on Support Package and Import Queue.



12. Click on Support Package > Confirm. This completes a successful installation of a patch.



SAP Basis Admin Tips:

<http://www.erpgreat.com/sap-bc.htm>